



# GAT MONTHLY MEMBERSHIP PROGRESS REPORT

Results as of: 4/30/2023

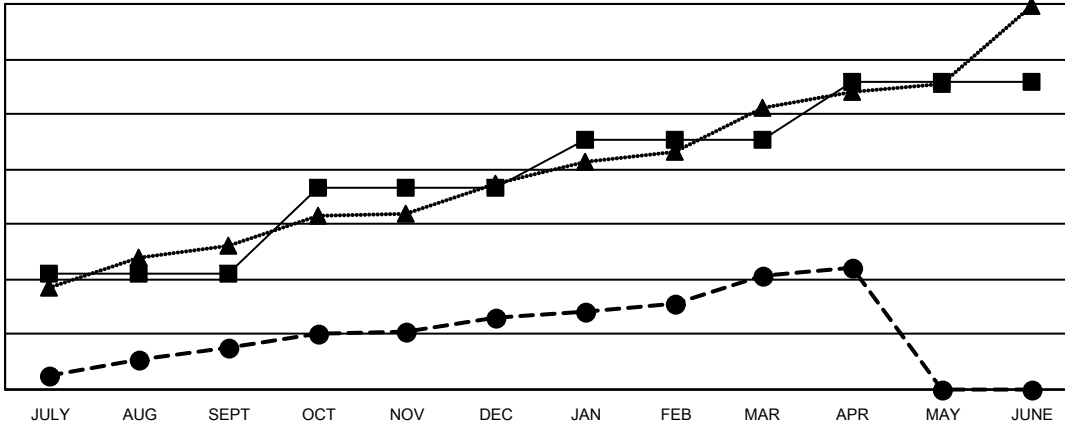
Multiple District 321

LOCATION: INDIA

Clubs			
RESULTS FOR 2022-2023			
QUARTER	NEW CLUB GOAL	NEW CLUBS	DROPPED CLUBS
JULY/AUG/SEPT	42	15	8
OCT/NOV/DEC	31	11	36
JAN/FEB/MAR	18	15	13
APR/MAY/JUNE	21	3	0

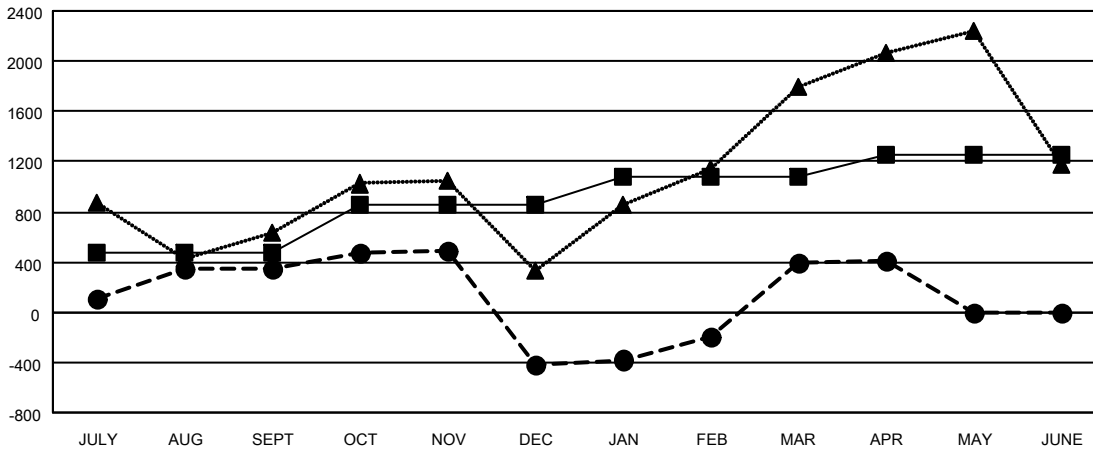
Members			
RESULTS FOR 2022-2023			
QUARTER	MEMBER GROWTH NET GOAL	MEMBER GROWTH ACTUAL	DROPPED MEMBERS ACTUAL (including transfers)
JULY/AUG/SEPT	480	1,337	845
OCT/NOV/DEC	370	938	1,647
JAN/FEB/MAR	235	1,690	630
APR/MAY/JUNE	165	231	191

GOALS AND ACTUAL NEW CLUBS CUMULATIVE



- CURRENT YEAR GOALS FOR NEW CLUBS
- CURRENT YEAR ACTUAL NEW CLUBS
- ▲- LAST YEAR ACTUAL NEW CLUBS

GOALS AND ACTUAL MEMBERS CUMULATIVE



- MEMBER GROWTH NET GOAL
- MEMBER GROWTH ACTUAL
- ▲- LAST YEAR MEMBERSHIP ACTUAL

DROPPED CLUBS: 57	
<b>DROPPED MEMBERS</b>	
DECEASED	64
CLUB CANCELLED	782
OTHER	2,467
<b>TOTAL</b>	<b>3,313</b>

582 CLUBS OF 1174 ADDED 1 OR MORE NEW MEMBERS

[CLICK HERE FOR CUMULATIVE MEMBERSHIP DATA](#)

GENDER DISTRIBUTION	
MALE	22,450 (67.63%)
FEMALE	10,734 (32.33%)
NON BINARY	0 (0.00%)
PREFER NOT TO ANSWER	13 (0.04%)
<b>TOTAL FAMILY UNIT MEMBERS</b>	<b>20,284</b>
<b>FAMILY MEMBERS PAYING HALF DUES</b>	<b>12,500</b>